

Functions of Sentences:

# Statements, Questions, Commands and Exclamations

Warm-Up

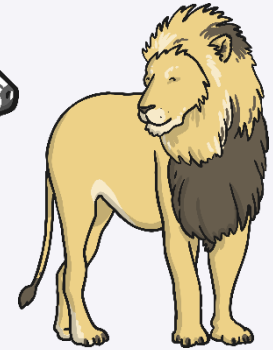
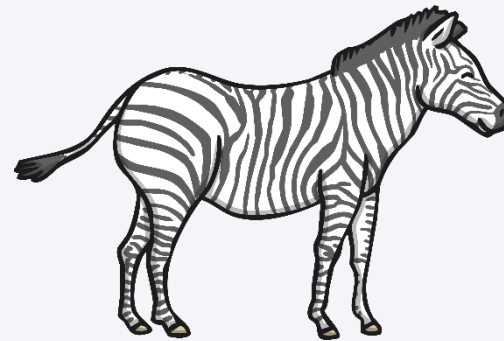
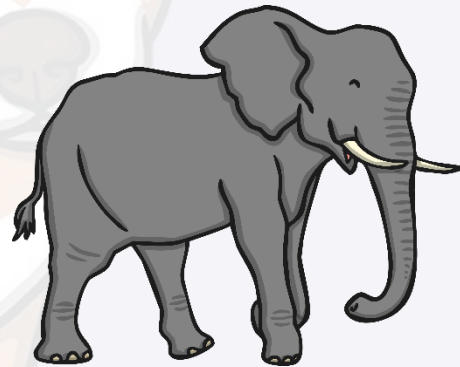


# Can you match the sentence with the correct sentence type?

Sentence	Type of Sentence
It is a beautiful day.	<b>statement</b>
Where should we have our picnic?	<b>question</b>
Take the sandwiches out of the lunch box.	<b>command</b>
What a mess we have made!	<b>exclamation</b>

**show answer**

Can you write one **statement** sentence that describes each of these animals?



Any sentence is correct as long as it tells you something about the animal and ends in a full stop.  
For example: The giraffe has a long neck. The elephant is huge. The zebra has stripes. The lion is fierce.

**show answer**

Can you rearrange the words in each sentence to make five statements that tell a story?

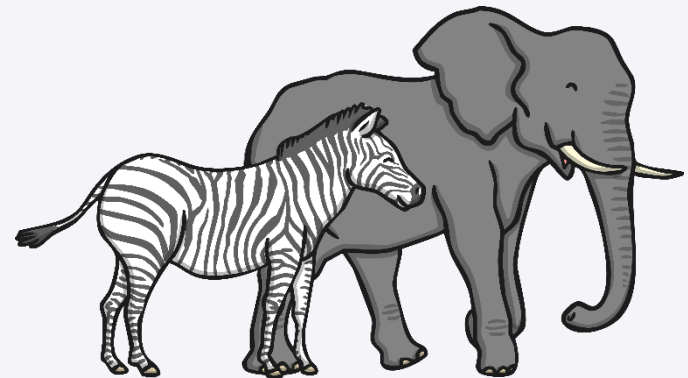
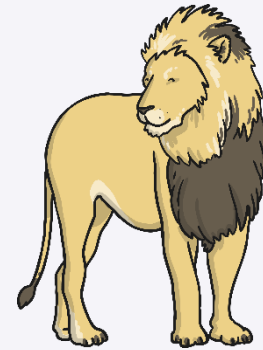
There is a lion in the savanna.

The lion is very happy.

The lion is very happy.

The lion is very happy.

The lion is very happy.



show answer

Can you turn these statement sentences into question sentences by adding punctuation, rearranging words or adding new words?

For example: The lion is vicious.

**Is the lion vicious?**

Giraffes have long necks so that they can reach tall trees.

**Do giraffes have long necks so that they can reach tall trees?**

Zebras have stripes to help them to camouflage.

**Do zebras have stripes to help them camouflage?**

African elephants have ears shaped like Africa.

**Do African elephants have ears shaped like Africa?**

**show answer**

Oh no, these aliens have got lost in space! Can you help them to get back to their home planets? Each planet is a different sentence type. Read the alien's sentences to work out where they live.

**show answer**

My eye is huge.



Bow down before me, weak humans!



Will I be home in time for tea?



What pointy ears I have!



**Planet Command**

**Planet Question**

**Planet Statement**

**Planet Exclamation**

**Challenge** Swap house questions with a partner and see if they can answer them.

The **Challenge** Swap house is a house where you have about what it would be like to live there. For example: How do you sleep upside down?



Challenge!

Can you choose the correct word from the question word hand to begin these question sentences?

Why is the sky blue?

Who is coming to the party?



Where have all the chocolate biscuits gone?

What should I dress up as for Halloween?

When will I be allowed to walk home on my own?

[show answer](#)

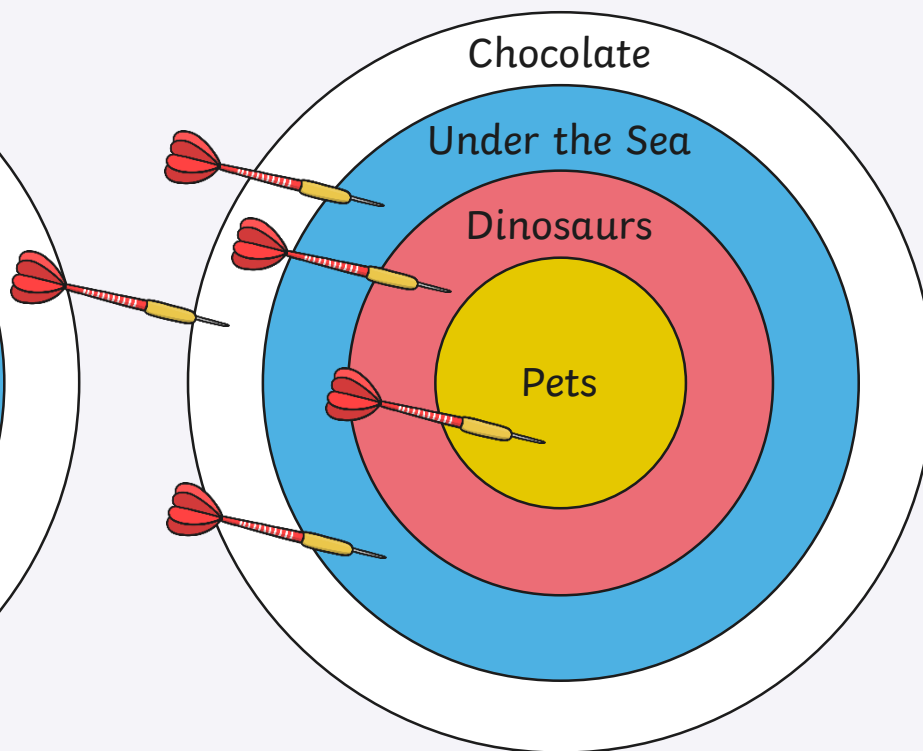
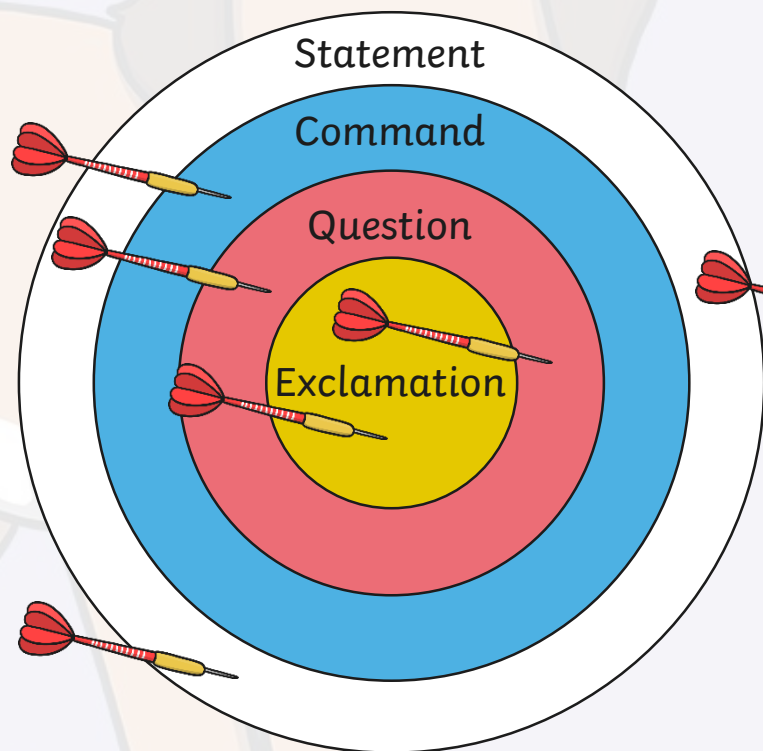


**Challenge** Write a list of questions that you would ask if you were interviewing for a new teacher at your school.



**Challenge!**

If your sentence is a statement, it must tell you something and end in a full stop.  
If your sentence is a command, it must tell you to do something. If your sentence  
lands on a question, it must end with a question mark. If your sentence  
lands on an exclamation, it must end with an exclamation mark. If your  
sentence is an exclamation, it must end in an exclamation mark, start with 'how'  
or 'what' and contain a verb.



**show answer**

**Throw!**

Can you choose the correct imperative (bossy) verbs to complete the commands in this recipe?

First, heat the oven to 180 C. Secondly, put the butter and sugar in a bowl and beat with a fork until fluffy. Next, sift the flour into the bowl. After that, whisk the eggs and then add to the bowl. Finally, spoon the mixture into paper cases and bake for twenty minutes in the oven.



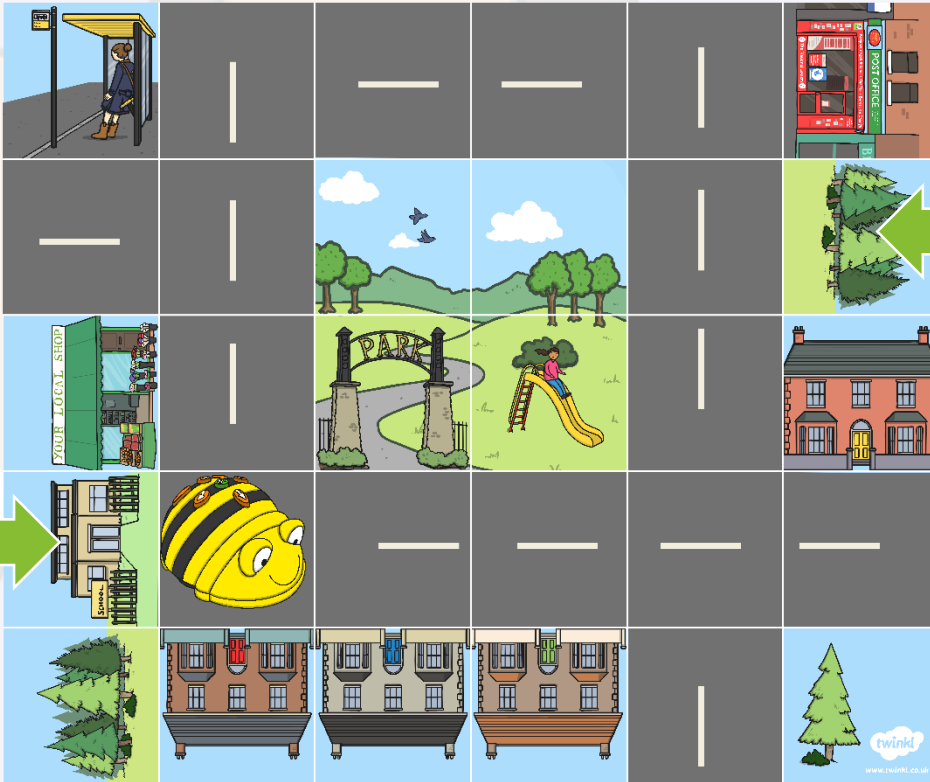
beat   add   spoon   sift   bake   heat   put   whisk

**Challenge:** Can you write your own recipe using lots of commands and imperative verbs?

show answer

Challenge!

**Challenge** Can you write your own directions to tell the Bee-Bot how to get from the school to the forest?



Go forward three squares. Turn left. Go forward 2 squares. Turn right. Go forward one square.

show answer

Challenge!

**Challenge** Can you write your own directions to tell the parrot how to get to the treasure?



Go forwards four squares. Turn right. Go forwards one square.

show answer

Challenge!

Can you fill in the missing verbs and nouns in the exclamation sentences that Little Red Riding Hood says to her grandma? Use the wolf's replies to help you.

Oh grandma, what big eyes you have!

All the better to see you with my dear.

Oh grandma, what big ears you have!

All the better to hear you with my dear.

Oh grandma, what a big nose you have!

All the better to smell you with my dear.

Oh grandma, what big teeth you have!

All the better to eat you with my dear!



[show answer](#)

In two minutes, see how many compliments you can write to other children in your class as exclamations.

**For example:**

**To:** Henry

**From:** Aishah

What neat  
handwriting you  
have!



**For example:**

**To:** Eva

**From:** Ibrahim

How good at  
football you are!

**show answer**

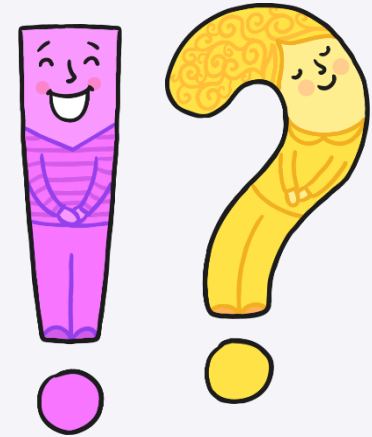
Any compliment will be an exclamation sentence as long as it starts with 'how' or 'what', contains a verb and ends in an exclamation mark.

Can you add the correct punctuation to these sentences?  
Think carefully about whether these sentences need a question mark or an exclamation mark!

What a way to say you're sorry !

What are you going to have for lunch today ?

How ridiculous to walk to school in the rain !



[show answer](#)



Can you write speech bubbles to imagine what each of the people at this football match is saying? One must be a command, one must be a statement, one must be a question and one must be an exclamation.

If your sentence is a statement, it must tell you something and end in a full stop.

If your sentence is a question, it must ask something and should end in a question mark.

If your sentence is a command, it must tell you to do something.

If your sentence is an exclamation, it must start with 'how' or 'what' and contain a verb.



[show answer](#)

Can you write speech bubbles to imagine what each of the children working in the group is saying? One must be a command, one must be a statement, one must be a question and one must be an exclamation.

If your sentence is a statement, it must tell you something and end in a full stop.

If your sentence is a question, it must ask something and should end in a question mark.

If your sentence is a command, it must tell you to do something.

If your sentence is an exclamation, it must start with 'how' or 'what' and contain a verb.



[show answer](#)

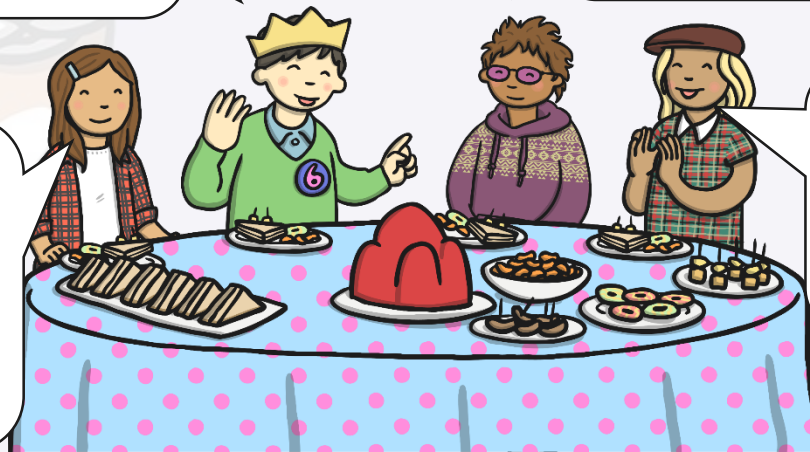
Can you write speech bubbles to imagine what each of the children at the party is saying? One must be a command, one must be a statement, one must be a question and one must be an exclamation.

If your sentence is a statement, it must tell you something and end in a full stop.

If your sentence is a command, it must tell you to do something.

If your sentence is a question, it must ask something and should end in a question mark.

If your sentence is an exclamation, it must start with 'how' or 'what' and contain a verb.



[show answer](#)



twinkl